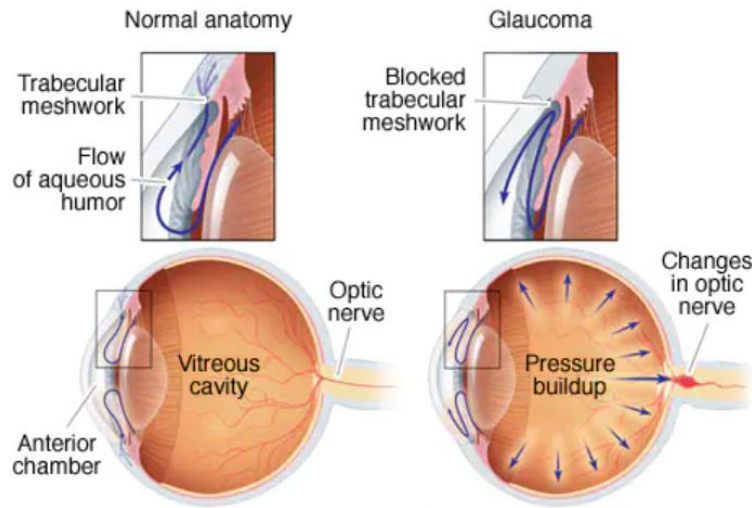


GLAUCOMA



Glaucoma is a group of diseases that are the result of damage to the optic nerve. As the nerve gradually deteriorates, blind spots develop in your visual field. For reasons that doctors don't fully understand, this nerve damage is usually related to increased pressure in the eye. Many forms of glaucoma have no warning signs. The effect is so gradual that you may not notice a change in vision until the condition is at an advanced stage

Symptoms:

- Patchy blind spots
- Tunnel vision in advanced stages
- Light sensitivity
- Headache, nausea, or vomiting in some cases
- Haloes around light sources

Causes:

- History of certain types of surgery
- Sleep apnea
- Corneas that are too thin
- Extreme nearsightedness or farsightedness
- Long-term steroid use
- Injuries to the eye
- Family history of glaucoma

Treatments:

- Eye Drops
- Laser
- Stents
- Incisional surgery
- In some instances, cataract surgery is a considerable option