

Seattle Center / Uptown Station Community Charrette



Seattle Center's Purpose: To create exceptional events, experiences and environments that delight and inspire the human spirit to build stronger communities.



Agenda

- **Purpose** of Today's Charrette
- **Roles and Responsibilities** of Participants
- **Process and Timeline**
- **Intended Outcomes** for Today's Charrette
- **Shared Vocabulary/Frequently Used Terms**
- **Breakout Sessions:**
 - **PART 1: Unearth Common Concerns**
 - **PART 2: Ideas and Opportunities**
- **Report Back**
- **Next Steps**

WHO DO YOU THINK THIS STATION WILL SERVE IN 10 YEARS?



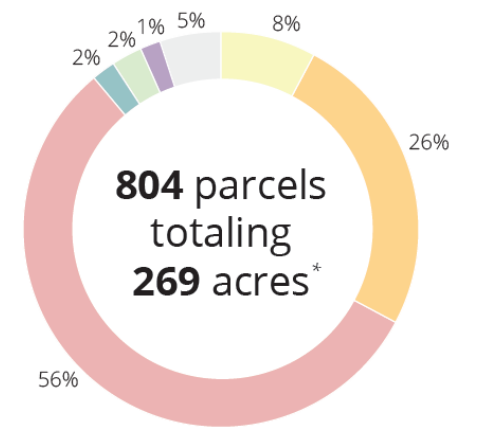
LAND USE MAP

- Single Family
- Multi-Family
- Commercial/Mixed-Use
- Major Institution & Public Facilities
- Parks & Open Space
- Industrial
- Vacant/Unknown

Source: 2019 King County Parcel Data

*Includes entire area of parcels fully or partially located within the walkshed.

= Potential Station Locations with 10-Minute Walkshed



Charrette Purpose : Envision an Integrated, Successful Light Rail Station for Seattle Center and Uptown

- Over 40 cultural, educational, sports and entertainment resident organizations + community programs + 1000's of events = **over 12 million visitors each year.**
- 3 mega-projects are poised to transform the Seattle Center campus:
 - **Climate Pledge Arena:** Renewed venue, new energy
 - **Memorial Stadium:** Partnership between SPS and City
 - **Light Rail:** Increased access throughout the region

What is YOUR vision for a successful Seattle Center/Uptown station that serves the campus, community, and transit riders?



Roles and Responsibilities



City of Seattle

Overseer of integration of WSBLE into the City; Regulatory/Permitting Agency, Cooperating/Partner Agency, manages public ROW for other city properties



Seattle Center

Steward of the Campus, Property Owner and Landlord, City Department



Stakeholders/ Resident Organizations

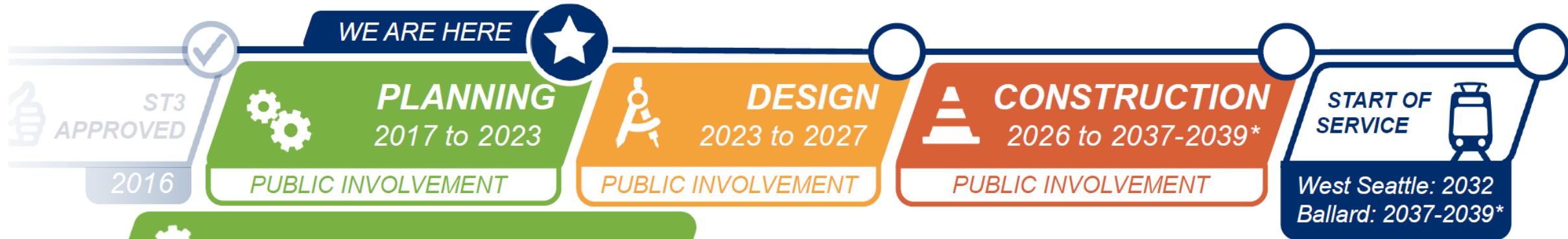
Cultural Organizations, Businesses, Service Providers, Event Producers and Neighbors



Sound Transit

Transit Agency in charge of planning, designing, building and operating the regional transit system

Process and Timeline



PLANNING

<p>2017–2019 Alternatives development</p> <ul style="list-style-type: none"> ✓ Feb–March 2018: Early scoping ✓ Feb–April 2019: Scoping ✓ May–Oct 2019: Board identified preferred alternatives and other DEIS alternatives 	<p>2019–2023 Environmental review</p> <ul style="list-style-type: none"> ★ Early 2022: Publish Draft EIS Public comment period Board confirms or modifies preferred alternatives 2023: Publish Final EIS Board selects projects to be built Federal Record of Decision
--	---

PUBLIC INVOLVEMENT

(Source: Sound Transit)

***Smith Cove to Ballard:** Target delivery 2037 / affordable delivery 2039
 Learn more at soundtransit.org/realignment



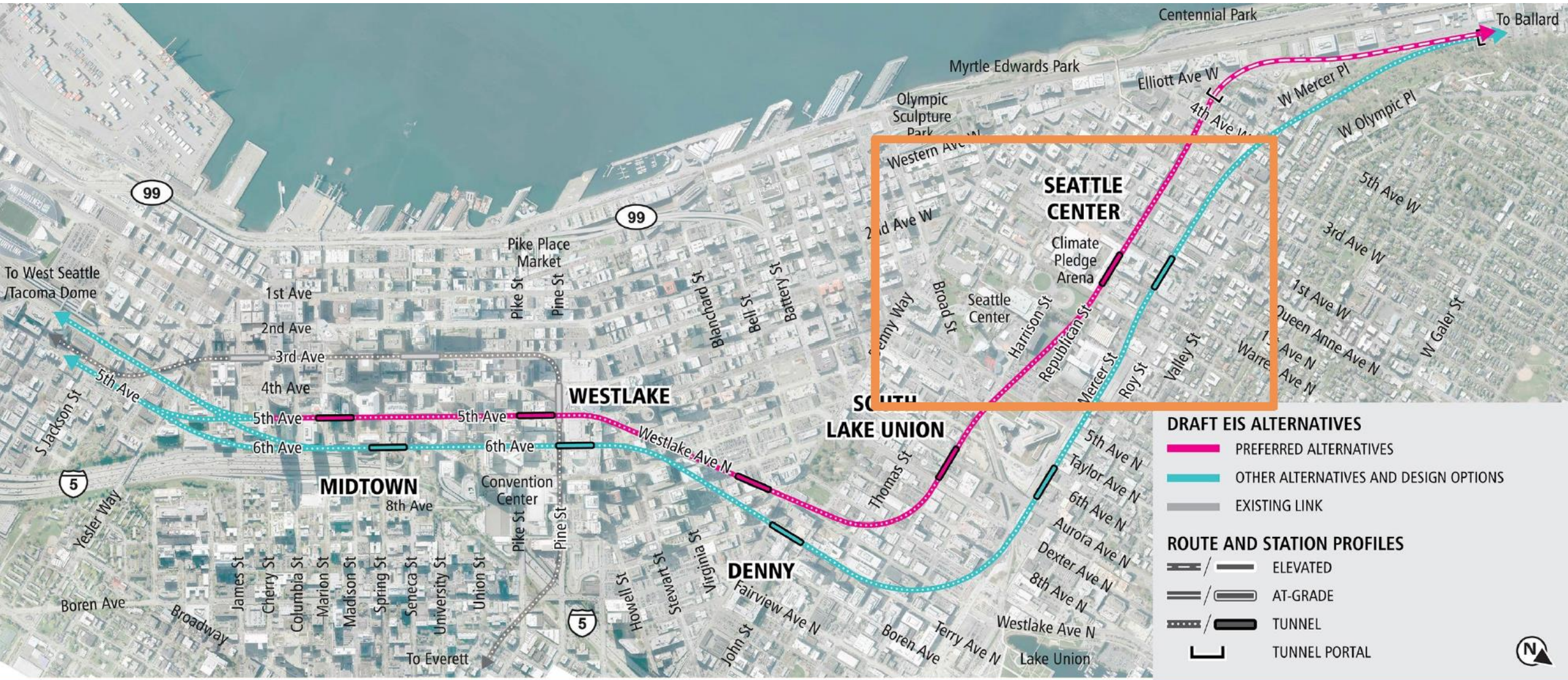
Intended Outcomes for Today's Charrette:

- 1. Opportunities:** Let's brainstorm possibilities with the wide range of creative minds and the depth of technical experts in the room
- 2. Common Priorities:** What shared values and outcomes do resident organizations have?
- 3. Concerns:** What would be untenable to the community, and should inform the City's comment letter on the Draft EIS during the Draft EIS comment period early next year.
- 4. Shared Vocabulary:** Words matter. Let's establish common understanding of frequently used terms.

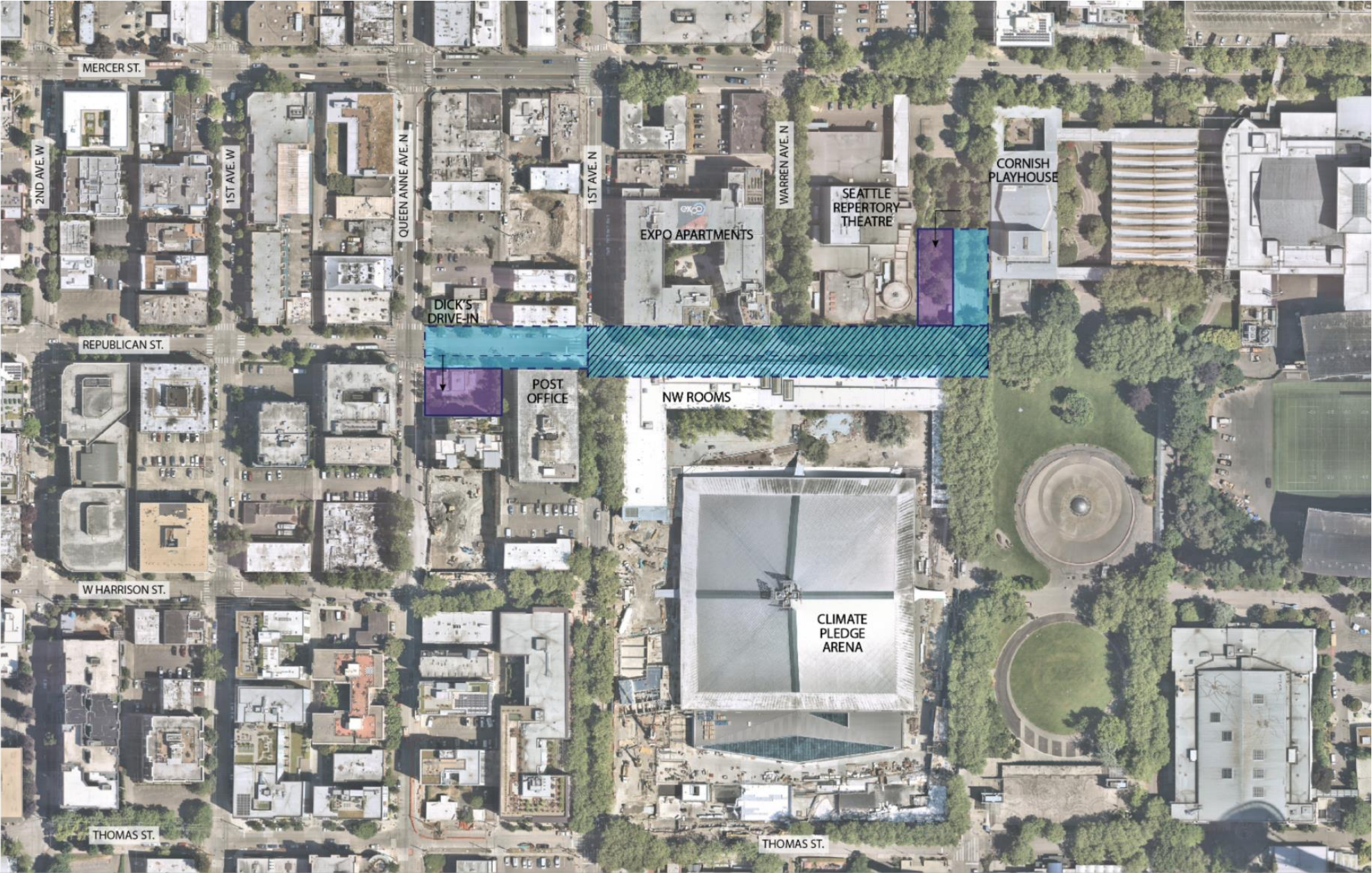
Shared Vocabulary/Frequently Used Terms:

- Where is the proposed project?
- What does a “Preferred Alternative” mean?
- What does a “cut and cover” station look like?
- What is the “station box”?
- What do side or center platforms on stations look like?
- What are other station elements?
- What do stations look like on the ground?
- What are the Draft EIS comments and when are they due?

Shared Vocabulary/Frequently Used Terms: Draft EIS Alternatives

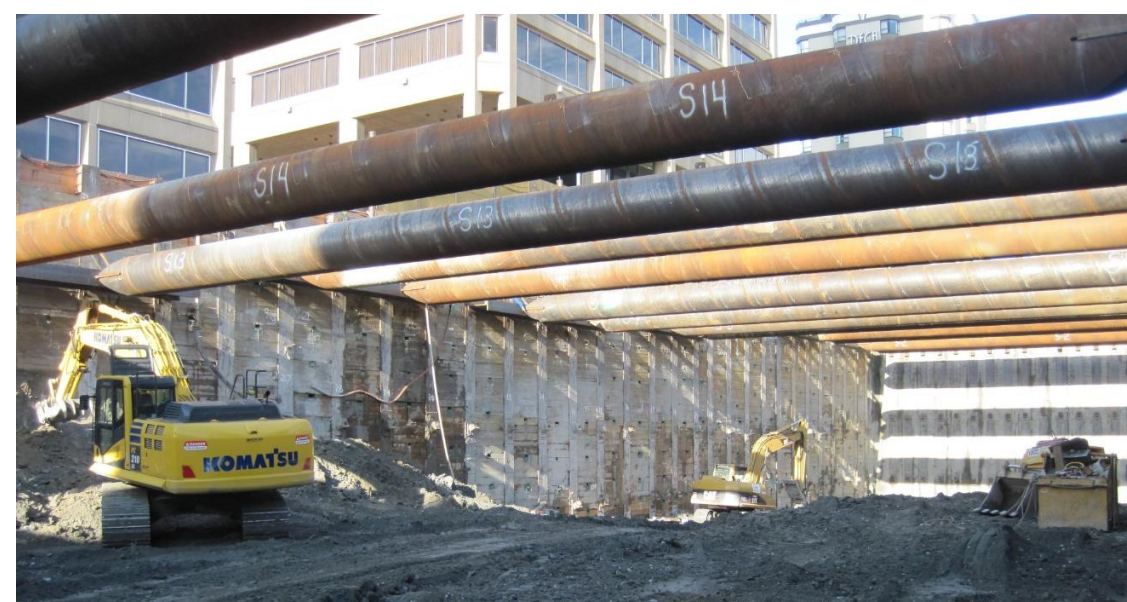


Shared Vocabulary/Frequently Used Terms: Preferred Alternative



- STATION ENTRANCE
- EXCAVATION
- DEEP EXCAVATION/STATION BOX

Shared Vocabulary/ Frequently Used Terms : Cut and Cover Station



Shared Vocabulary/ Frequently Used Terms:

Station Box



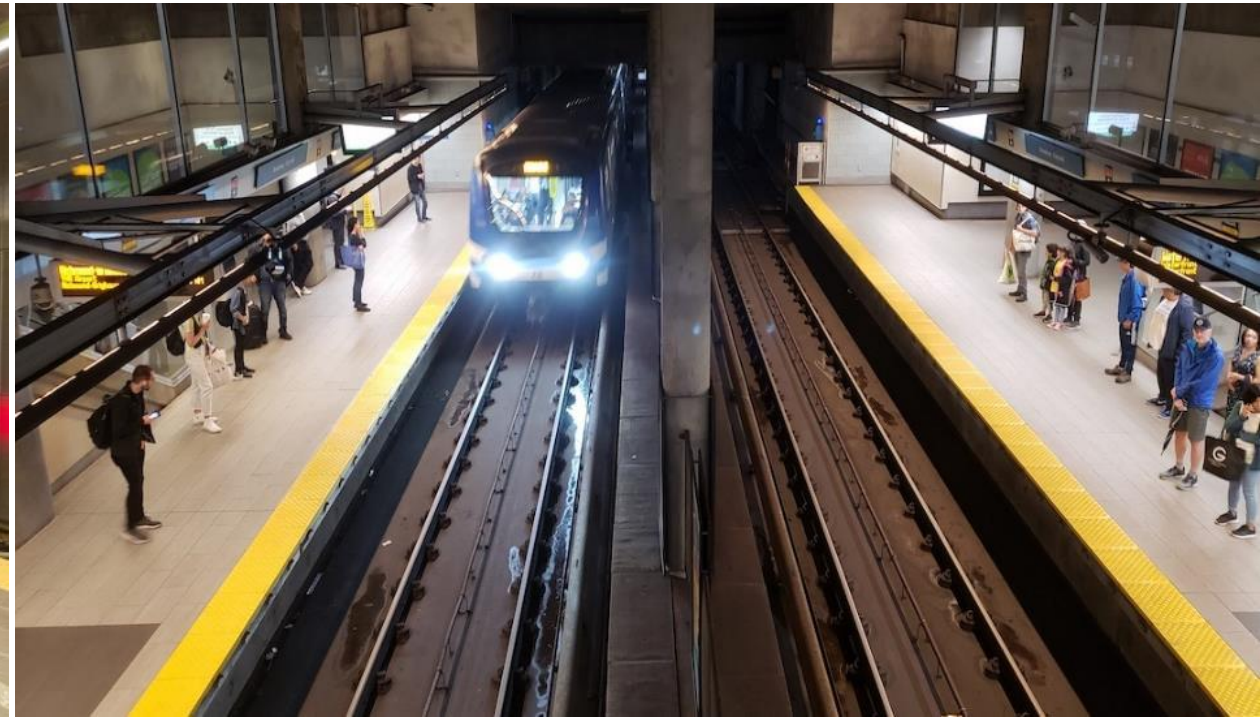
03/23/2015 08:02

Shared Vocabulary/ Frequently Used Terms:

Center Platform

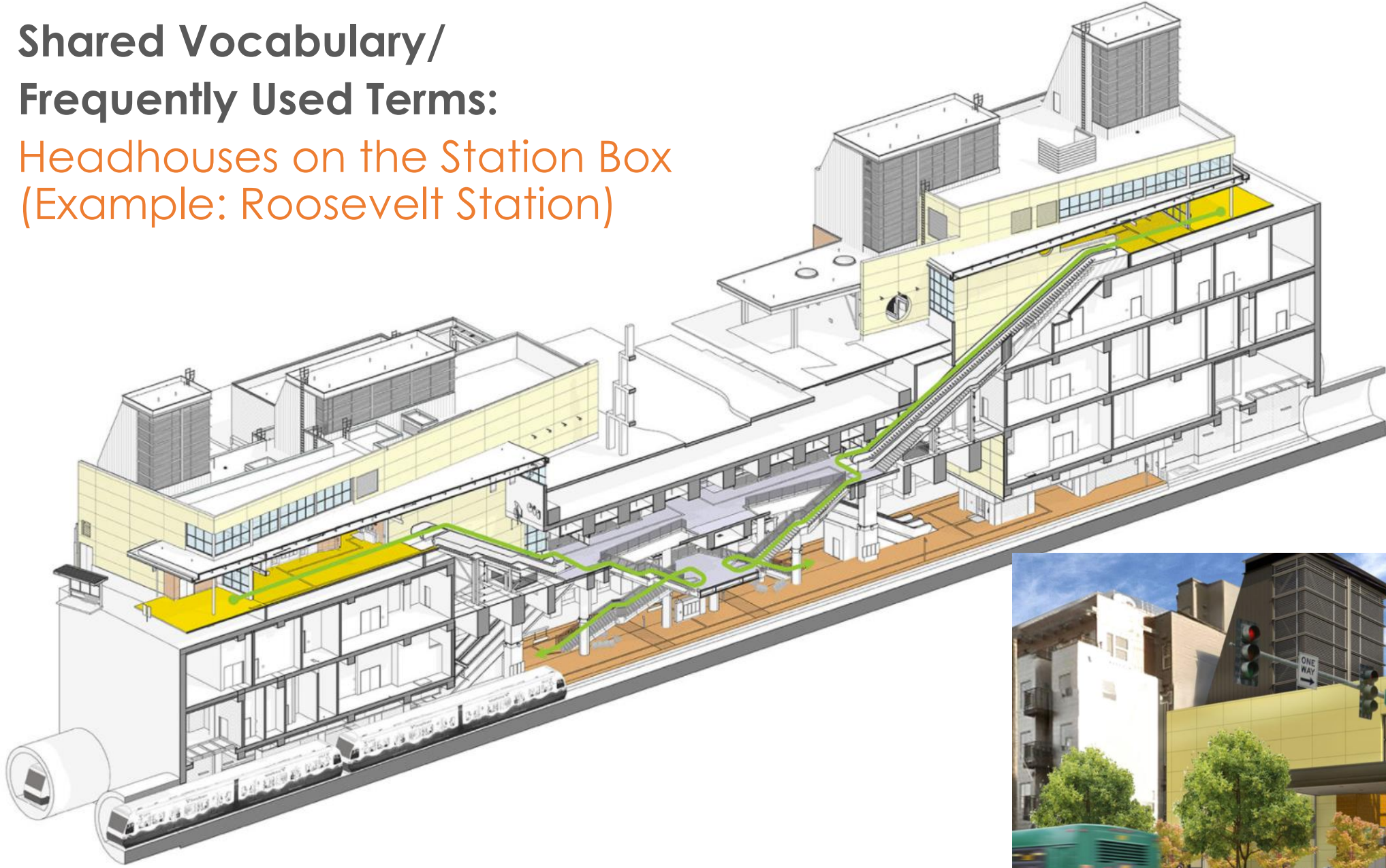


Side Platform

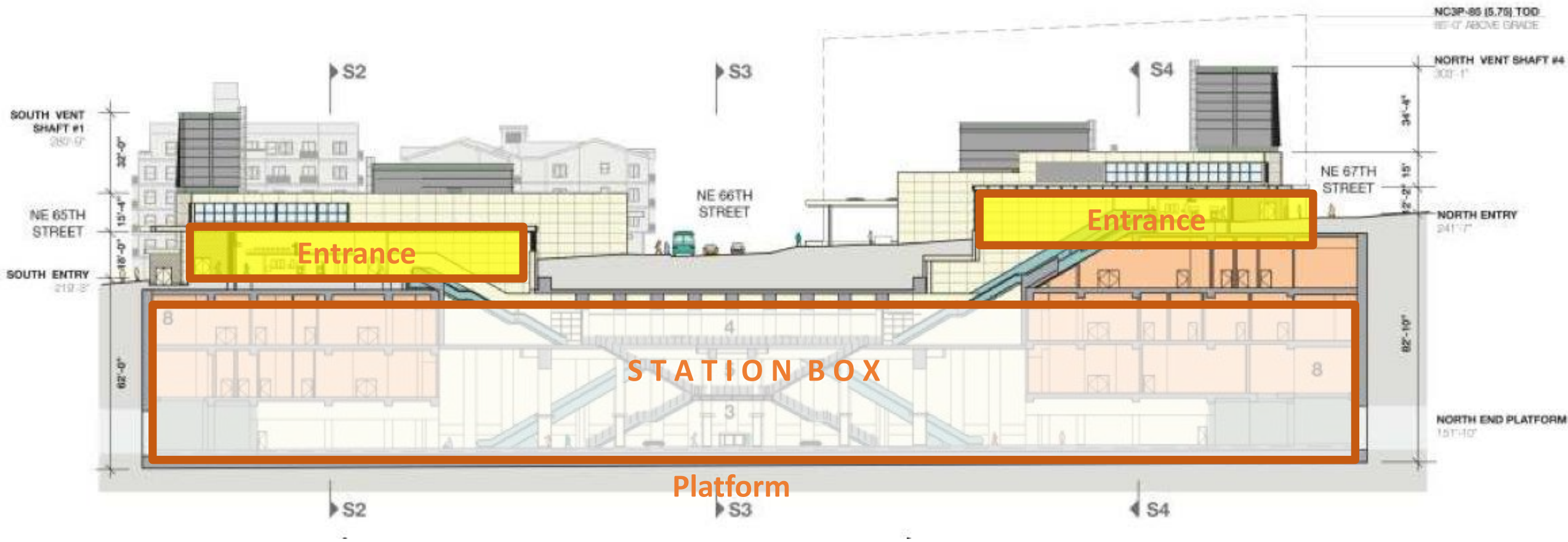


Shared Vocabulary/ Frequently Used Terms:

Headhouses on the Station Box
(Example: Roosevelt Station)



Shared Vocabulary/Frequently Used Terms: Station Access



Roosevelt Station: 60% Design

Shared Vocabulary/Frequently Used Terms: Station Headhouses

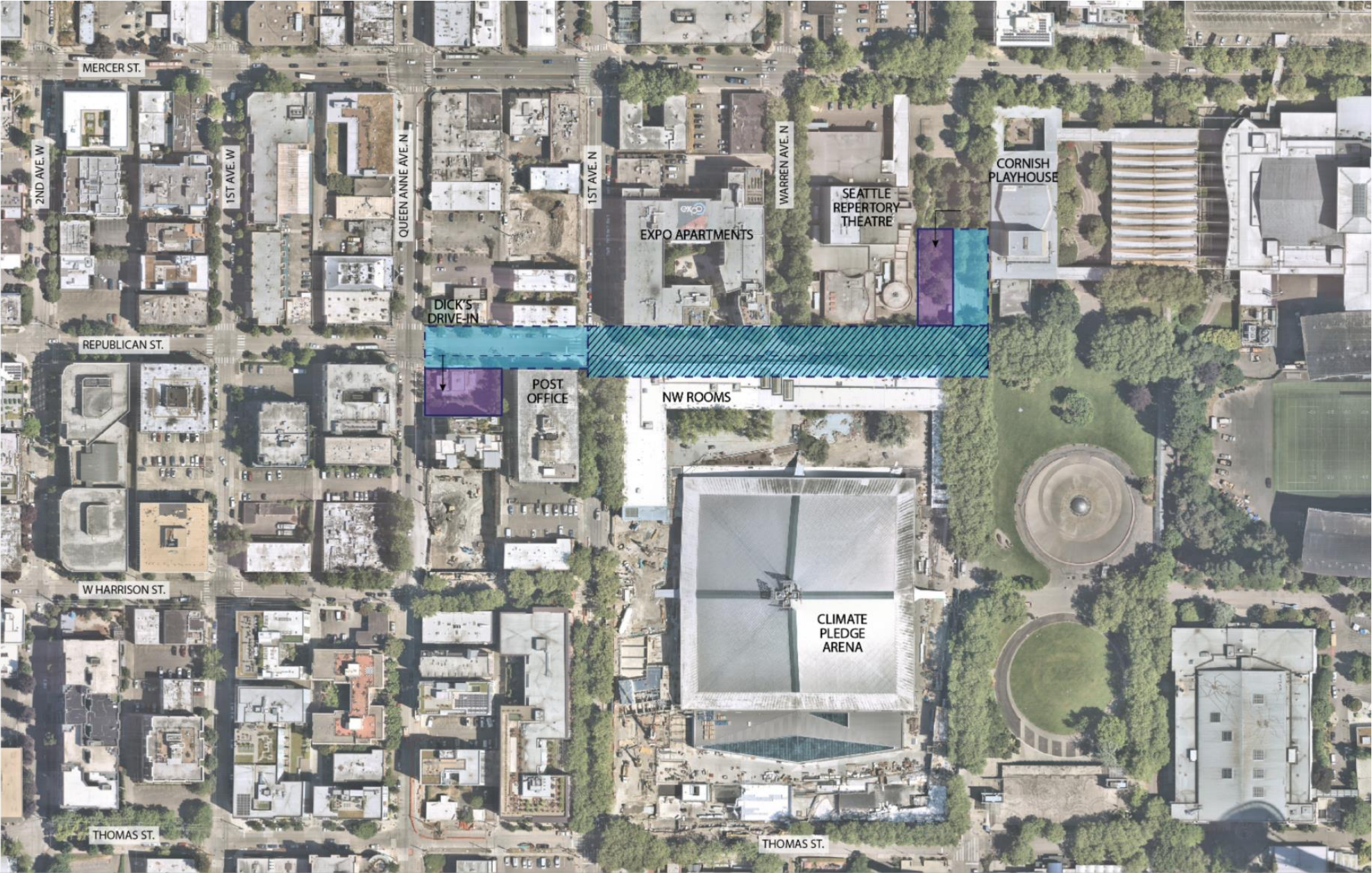





Roosevelt Station

Shared Vocabulary/Frequently Used Terms: Offset Station Entrances



Break Out Session: Preferred Alternative



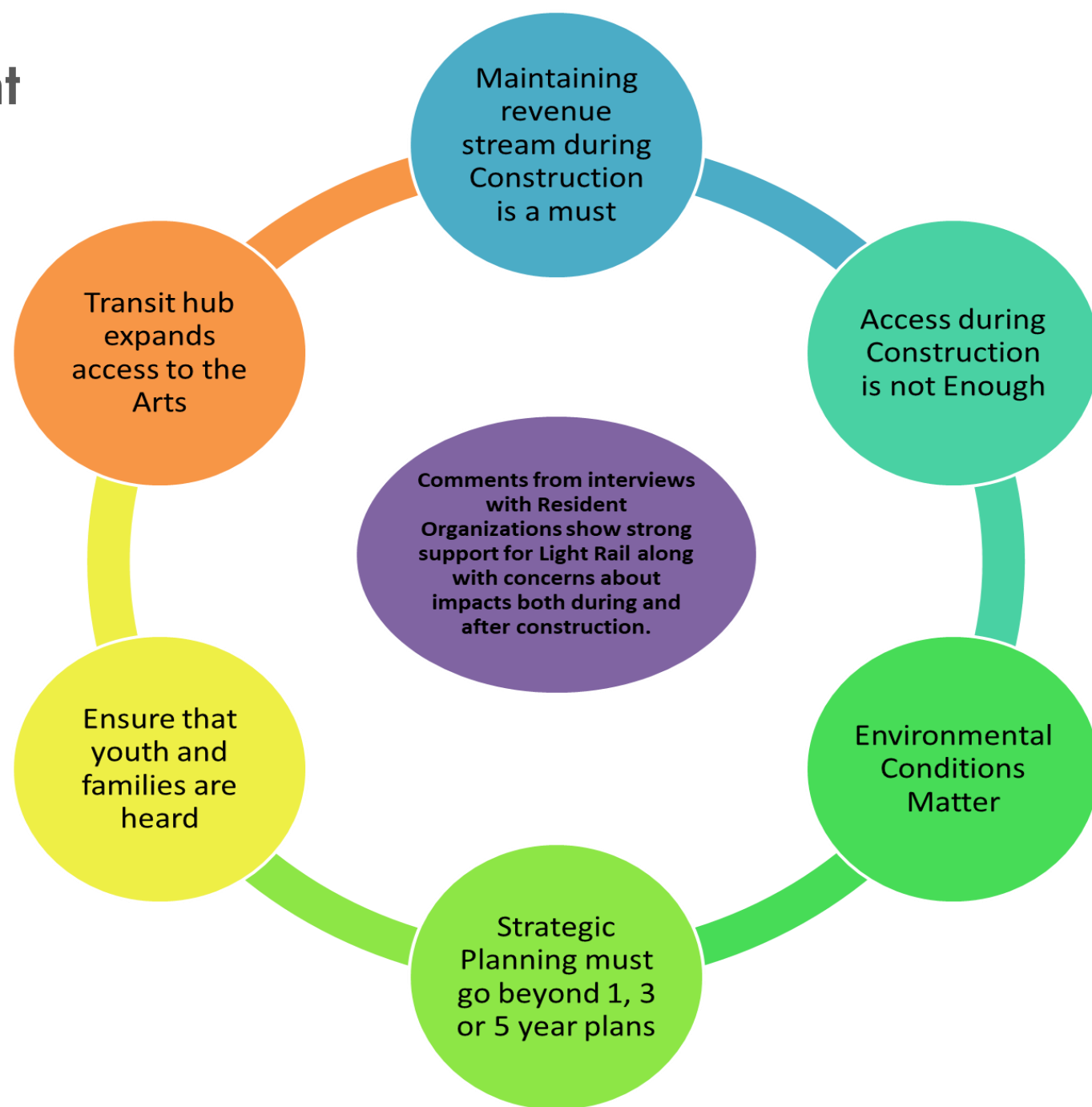
-  STATION ENTRANCE
-  EXCAVATION
-  DEEP EXCAVATION/
STATION BOX

What the City will be looking for in Draft EIS:

- Temporary Construction Concerns:
 - Lengthy periods of noise, road closures
 - Potential damage to the NW Rooms
 - Disruption of underground utilities (steam, water, sewer and power)
- Permanent Operational Concerns:
 - Station entrance could displace recreational space, events space, functional and support spaces (loading, maintenance)
 - Noise/vibration impacts underground
 - Adjacent/above-grade noise and aesthetic impacts
 - Loss of legacy trees
 - Ongoing coordination to operate a station within an active campus

Summary of Resident Organization Comments

(hand out at tables)



What Do YOU Think is Critical for the Success of the Seattle Center/Uptown Station? What Did we Miss?

1. Minimize construction/operational impacts to the campus
2. Visually integrate the station entrance with the Seattle Center campus
3. Support Seattle Center's future success as a public recreational resource
 - Support the health of Seattle Center's tenants – current and future
 - Retain open and functional spaces
 - Station operations fit within the daily campus activities
 - Expand the reach of Seattle Center to community

Ground Rules

- **Workshops start and end on time:** please arrive on time and stay until business is complete
- **Be prepared:** review previously distributed materials ahead of time
- Please, no cell phones, laptop or digital devices to be used during the workshop
- **Be open minded, curious, and seek to understand**
- **Stay focused on our common goal:** embrace an open and honest dialogue
- **Respect confidentiality:** individual thoughts should not be shared outside this group
- **Assume good intentions:** respect difference of opinion, don't be critical of others for speaking honestly
- **Listen carefully & deeply:** seek to understand and embrace experiences different than your own
- **“Step up, Step back”:** empower yourself to speak, and be mindful of how much space you are taking up in the group
- **Use inclusive language:** honor stated pronouns and boundaries, and avoid jargon/acronyms to preserve accessibility of the space
- **Conduct the discussion based on knowledge, not assumptions**
- **Acknowledge an informed-consensus approach**

Breakout Session 1: Unearth Common Concerns

Express your concerns, questions, and experiences with us!

Introductions: in 30 seconds, introduce yourself, your role within your organization, and share your favorite system/station, or one that you think is GREAT, and tell us why

Breakout Session 1: Unearth Common Concerns

Some of our favorite systems and stations, or ones we think are GREAT and why:



Avignon Station



Utrecht Centraal Station, Netherlands



Elizabeth Line, London Underground



Tukwila International Boulevard Station



Yaletown Roadhouse Station, Vancouver BC

Breakout Session 2: Ideas and Opportunities

An opportunity to explore and focus on possibilities together for addressing the potential concerns and creating a better outcome

REPORT OUT

Intended Outcomes for Today's Charrette:

- 1. Opportunities:** Let's brainstorm possibilities with the wide range of creative minds and the depth of technical experts in the room
- 2. Common Priorities:** What shared values and outcomes do resident organizations have?
- 3. Concerns:** What would be untenable to the community, and should inform the City's comment letter on the Draft EIS during the Draft EIS comment period early next year.
- 4. Shared Vocabulary:** Words matter. Let's establish common understanding of frequently used terms.

Did we accomplish these?

Next Steps

- Charrette Debrief – we will summarize and circulate to all of you
- Seattle Center Foundation will prepare a Draft EIS comment letter which will reflect what we heard today
- Seattle Center and the City of Seattle will take today's ideas and collate, review and share with Sound Transit
- Resident Organizations – take today's experiences back to your staff and stakeholders - ***tell your people!***

One-Word Takeaways from Today!